



10 Things to See at DesignDC 2017

Attend DesignDC 2017 to unlock dozens of opportunities to learn new things and accumulate continuing education credits toward several design certifications. Register to attend by July

30th to save up to \$100!

Held Tuesday, October 3rd, through Thursday, October 5th, this annual design conference connects designers with builders, architects with planners, and urbanists with environmentalists. The theme of this year's DesignDC conference is Rooted in Resilience. Showing up will guarantee a seat in a discussion looking at how the DC region has achieved resiliency. Big, interdisciplinary words like resilience demand diverse perspectives. That's why you should attend. This conference will benefit from your voice just as this city prospers from your design.

Wondering what there is to see at DesignDC 2017? Read on for our Top-10 List of conference items we think you should prioritize. Registration and full event info at <http://bit.ly/DesignDC2K17>.

1. The Georgetown-Rosslyn Gondola Feasibility Study (Tues | 8:30 AM)

This session examines the Georgetown-Rosslyn Gondola Feasibility Study which was completed in November 2016. The consideration of aerial gondolas was a desire to "think big" and to examine international cities where gondolas have been effectively implemented to provide transit service for underserved communities.

(Credits: 1.5 AIA LUs; 1.5 AICP CM credits ; 1.5 GBCI CE hours (self-report); 1.5 LACES CEUs)

2. Saving History: Restoration & Conservation After Disaster (Tues | 10:15 AM)

Using case studies, this panel (including a conservator, engineer, and contractor) will discuss how to implement immediate and long-term repairs, restoration, and conservation in historic buildings following floods, earthquakes, fires, and other disasters. The session focuses on best practices that maintain the historic integrity of the building fabric, stabilize and create a safe environment, and allow for long-term, long-lasting solutions.

(Credits: 1.5 AIA HSW | LUs)

(continued on page 3)





Send Us Your Postcards!

The spirit of mailing postcards is alive and well. Our newest exhibition features postcards that capture moments, places, and people from DC history. We want YOU to be a part of it.

Traveling this summer? Do you have family or friends in faraway places? Send us a postcard! Reach out to folks and ask them to send a postcard to DC from their neck of the woods. Include a note about your adventure or the landmark and landscape on the postcard.

Send postcards to our offices at the District Architecture Center.

Mailing Address:
District Architecture Center
 421 7th Street NW
 Washington, DC 20004
 USA

AIA|DC'S Newest Members

Please welcome our new and returning members!

- Mazen AbdelHamid, Assoc. AIA
- Olivia Calalo, AIA
- Zachary Caplette, Assoc. AIA
- Branden Carter, Assoc. AIA
- Alexander Cheng, Assoc. AIA
- Myles Clark, Assoc. AIA
- Christopher Conner, AIA
- Vail De Capite, Assoc. AIA
- Elizabeth Duray, AIA
- Ernesto Encinas, Assoc. AIA
- Casey Fair, Assoc. AIA
- Pedro Gomide, Assoc. AIA
- Julieta Guillermet, Assoc. AIA
- Kara Johnston, Assoc. AIA
- Gentry Kowall, AIA
- Miranda Lee, Assoc. AIA
- Tiffany Lockhart, AIA
- Dailong Ma, Assoc. AIA
- Matthew Marcarelli, AIA
- Brian McGarry, Assoc. AIA
- Yaminah Mujahid-Lambert, Assoc. AIA
- Dahlia Nduom, AIA
- Austin Raimond, Assoc. AIA
- Dean Sartain, Assoc. AIA
- Andrew Schmidt, Assoc. AIA
- Todd Stevens, AIA
- Portia Strahan, Assoc. AIA
- Marie Thorogood, Assoc. AIA
- Claire Tritschler, Assoc. AIA
- Kevin Vandeman, AIA
- Oliver Vranesh, Assoc. AIA
- Breanna Weaver, Assoc. AIA
- Christina Weaver, Assoc. AIA
- Mark Weisgerber, AIA

Bee Exhibition Shatters Attendance Record

DAC Exhibitions Manager Scott Clowney reports that *Bees in the City* and *The Pollinator-friendly Garden* — the most recent exhibitions at DAC — were visited by 1,247 people. That breaks the previous gallery visitation record by more than fifty percent!

Shortly after those exhibitions came down from the DAC walls, a second bee hive was added to the building's rooftop habitat. During the commotion, bee stings were kept to one. They were warned but — no — they didn't listen.

Staff News

After almost 3 years at the chapter, Communications Coordinator, Asya Snejnevski, stepped down in May to begin a Masters in Landscape Architecture at the University of Washington in Seattle. AIA | DC welcomes Gordon Chaffin as he steps in to take over

communications. A multi-modal transit nerd, he's excited to continue working in the urban planning space. Ask him about his shipping container house. AIA | DC is also excited to announce that Sinclair Erdwien has been promoted to Member Engagement Manager.

AIA|DC 2017 Board of Directors

Carolyn Sponza, AIA	President	Hal Davis, FAIA	Director at Large	Bill Spack, AIA	Director at Large
Joe Sacco, AIA	Vice President / President Elect	Diana Horvat, AIA	Director at Large	Todd Steighner, AIA	Director at Large
Marc Fairbrother, AIA	Treasurer	Andy Fuhrmann	Director at Large	Kevin Storm, AIA	Director at Large
Rob Holzbach, AIA	Secretary	Douglas Palladino, AIA	Director at Large	David Varner, AIA	Director at Large
Sean Stadler, AIA	Immediate Past President	Yiselle Santos, Assoc. AIA	Director at Large	Mary Fitch, AICP, Hon. AIA	Executive Director
Jason Arnold, AIA	Director of Public Architects				

AIA|DC News is published bimonthly by the Washington Chapter of the American Institute of Architects and is distributed to over 2,200 AIA|DC members and corporate and professional affiliates in the Washington, DC metropolitan area. The News is printed on Rolland Enviro 100, a 100% post-consumer waste paper.

The editorial deadline for each issue is the first day of the preceding month. Submissions received after this date may be held for publishing due to spatial limitations. Editorial contributions and letters are welcome. We reserve the right

to edit submissions. Opinions expressed by contributing authors do not necessarily reflect the policies or views of the Washington Chapter/AIA, or its officers, directors, or employees.

EDITOR
 Gordon Chaffin

MEMBER NEWS ITEMS
 newsletter@aiaadc.com

AIA|DC STAFF
 Mary Fitch, AICP, Hon. AIA
 Executive Director

Katherine Adams
Development Director
 Kelsey Arrington
Gallery Assistant
 Gordon Chaffin
Communication Manager
 Scott Clowney
Exhibitions Manager
 Sinclair Erdwien
Member Engagement Manager
 Melody Harrison
Member Service and Committee Liaison Director
 Laura Headrick
Events Manager

Heritage Honey
Beekeeper
 Rachel Robinson
Gallery Assistant
 Rostin Rostai
Gallery Assistant
 Rachel Simonson
Foundation Outreach Coordinator
 Katie Spencer
Programs Director

ADVERTISING SALES MANAGER
 Jody Cranford 800-818-0289
 jcranford@aiaadc.com



10 Things to See at DesignDC 2017 *(continued from cover)*

3. Keynote: Timothy Beatley (Tues | 1:45 PM)

Timothy Beatley is the Teresa Heinz Professor of Sustainable Communities, in the Department of Urban and Environmental Planning, School of Architecture at the University of Virginia, where he has taught for the last twenty-five years. Much of Beatley's work focuses on sustainable communities, and creative strategies by which cities and towns can fundamentally reduce their ecological footprints, while at the same time becoming more livable and equitable places. His most recent book is *Handbook of Biophilic City Planning & Design*, which argues that cities can and must be designed to permit daily contact with the natural world.
(Credits: 1 AIA HSW | LUs; 1 AICP CM credits)

4. The Citizens Behind The City: Communities Designed For Enduring Wellbeing (Tues | 3 PM)

The challenge for design professionals is creating neighborhoods and buildings that endure through hardship and rebound rapidly so they flourish in any economic, environmental, or political change. Today's regulatory environment strong-arms the design process, often disregarding the end user's experience entirely. This interactive workshop addresses this critical issue, placing citizens at the center of the design process, where they belong.
(Credits: 1.5 AIA HSW | LUs; 1.5 AICP CM credits ; 1.5 GBCI CE hours (self-report); 1.5 LACES CEUs)

5. Designing for Growth in DC: Public and Private Perspectives on Green Regulations (Wed | 8:45 AM)

While the economic impact of DC's growth is well documented, the impact on aging city infrastructure is harder to quantify. Each new building in DC has the potential to add stress to services we rely on, from our sewers to our electrical grid to our transportation infrastructure. Learn how city officials have utilized green building standards and regulations to limit the potential adverse effects of a population boom on essential public services, and how architects can utilize green design to help DC achieve its ambitious sustainability and resiliency goals.
(Credits: 1.5 AIA HSW | LUs; 1.5 AICP CM credits ; 1.5 GBCI CE hours (self-report); 1.5 LACES CEUs)

6. Restoring the Missing Middle: Balancing Density and Scale in Urban Infill Housing (Wed | 11 AM)

A lack of sustainable housing options has become a growing issue in American cities and suburbs. This panel focuses on how to meet the needs of housing supply and affordability in changing cities, using the Washington metro area as an example. By leveraging scale, density, neighborhood amenities, proximity to mass transit, and the inclusion of more varied types of multi-unit housing – duplexes, garden apartments, and courtyard housing – middle housing typologies produce resilient communities.
(Credits: 1.5 AIA HSW | LUs; 1.5 AICP CM credits ; 1.5 GBCI CE hours (self-report); 1.5 LACES CEUs)

7. Advocacy as a Tool to Empower Leaders (Wed | 2:15 PM)

To have resilient cities, architecture needs to be a resilient profession that reflects the communities. The key to a resilient profession is to empower future leaders. Understanding what drives the workforce is imperative to keeping future leaders engaged in the architectural profession. Join two architecture professionals that have been empowered through involvement with political and community advocacy, locally and nationally. This session presents insight into how to most effectively use resources to confidently speak about and execute advocacy work.
(Credits: 1.5 AIA LUs; 0.1 IDCEC CEUs (self-report))

8. The Resilient Woman: The Case of Howard University's Architecture and Planning Graduates (Wed | 4 PM)

This presentation will focus on the resiliency of women who have been trained at Howard University in architecture and city planning. Architecture education began at Howard in 1911, but it was not until 1950 when it graduated its first female student. Though highlighting the Howard trained practitioner whose professional development was guided by the University's motto, *Veritas et Utilitas* (Truth and Service), the learning objectives embrace women who have been trained in the design and planning fields, in general.
(Credits: 1.5 AIA LUs; 1.5 AICP CM credits; 0.1 IDCEC CEUs (self-report); 1.5 LACES CEUs)

9. Tour: REmodel, REduce, and Repurpose on Capitol Hill (Thurs | 10 AM)

A walking tour of historic Capitol Hill that includes four adaptive reuse projects. Get off the Metro at Potomac Station and begin the tour at Watkins Alley. Watkins Alley reflects the eclectic mingling of Capitol Hill itself with 44 city homes in a unique mix of vintage industrial on the alleys and classic Victorians along E Street. Across the street, participants will see the complete renovation the iconic Buchanan School, built in 1895 and redeveloped into 41 condos which will eventually be fronted by townhomes along the street. From there we will go to see the city homes of Cluss Alley where every bedroom is a suite, private, garage parking is a given, and a ground floor without dividing walls opens fully to the outdoors. Finally, we will take a 15 minute walk to the final project while the tour leader tells the group about the opportunities and challenges of doing adaptive reuse in the District of Columbia. The last stop, New Union Garage was a working garage built in 1906 and tucked between residential rowhomes.
(Credits: 1.5 AIA HSW | LUs; 1.5 AICP CM credits ; 1.5 GBCI CE hours (self-report))

10. Connect with and Learn from Expo Hall Exhibitors (Tues/Wed)

Over half the exhibitors are new to DesignDC 2017. Taking a tour around the Expo Hall offers the chance to connect with current suppliers, learn about new products, and digest trends in the industry. The conference theme is resilience, so why not review green roof options with Riverbend Nursery and their LiveRoof product? A Full list of exhibitors and Expo Hall map at <http://bit.ly/DesignDC17Exhibitors>

Changes Coming to AIA|DC Marketing

Members will notice changes to the frequency and content of AIA | DC emails and social media. Expect fewer emails, each more important to open, read, and click on. It is critical to follow the Chapter and sister organizations on social media.

Each email will cover several topics, including lists of events and deadlines, and look forward only one week in the calendar. Effective marketing efforts require a long lead time, so please make requests one month in advance. Committees, stakeholders, and partner organizations are welcome to ask for help.

The modifications are to serve goals of expanding the Chapter's presence in the Washington, DC design community, to emphasize quality over quantity, and invest resources in digital, multimedia, and modern communications.

AIA | DC Newsflash will continue as a weekly packet of information with deadlines and events for the following week. A week-end email from the District Architecture Center will arrive to help you plan the week ahead with public and continuing

education programs. Early each week, the Washington Architectural Foundation will update subscribers on community and school programming.

To ensure you receive each email, go to <http://bit.ly/DCArchSubscribe> and select "News from AIA | DC" for Newsflash as you complete the form. To receive updates from sister organizations, select "News from District Architecture Center" and "News from Washington Architectural Foundation."

Remember to follow on social media channels. AIA | DC, the District Architecture Center, and the Washington Architectural Foundation all have separate pages on most platforms.

AIA | DC is @WashingtonDCAIA on Twitter and at Facebook.com/AIADC. The District Architecture Center is @DCArchCenter on Twitter and at Facebook.com/DistrictArchCenter. The Washington Architectural Foundation is @WashArchFound on Twitter and at Facebook.com/WashingtonArchitecturalFoundation. Follow all three organizations on Instagram @DistrictArchCenter.



ArchitectureDC Summer 2017 Features Minimalist Residential & More

Subscribers to *ArchitectureDC* should have received their copies in the mail. Featured projects include an 1,100-square-foot cabin renovation for a family that embraces minimalist design — not only a small living space but also installing little of the furniture that fills the everyday home. Mark McInturff, FAIA, of McInturff Architects crafted the woody rebirth himself; one of two solo projects he takes on each year. Read the magazine in full online at flipbook.hbp.com/summer2017.

2017 Washingtonian Award Winners Crowned

On Tuesday, June 6, 2017, AIA | DC hosted deliberations of the jury determining 2017's Washington Residential Design Awards. During the roundtable held following winner selection, the panel explained elements of a quality application. Jurist Jason Forney, AIA LEED AP, lauded the Chapter for presenting "a fantastically diverse set of well-designed buildings." To review a full list of submissions, go to the AIA | DC blog at <http://www.aiadc.com/2017WashingtonianWinners>.

2017 Winners

DETAIL

Staircase in the Mathewson Residence by **Shinberg Levinas Architectural Design Inc**
Staircase in T-PorTwo by **Wiebenson & Dorman Architects PC**

SMALL PROJECTS

Naylor Court Play House by **E/L Studio**
Alley Armor by **KUBE Architecture**

GENERAL

Kalorama Row House by **Carter + Burton Architecture, P.L.C.**
Becherer House by **Robert M. Gurney, FAIA**
Mi Casita by **KUBE Architecture**
21st Century Cabin by **McInturff Architects**

PRESERVATION

Four Pavilions by **Richard Williams Architects**

MULTI-FAMILY HOUSING

John and Jill Ker Conway Residence by **DLR Group | Sorg Architects | Westlake Reed Leskosky**
CityCenter DC Apartments by **Shalom Baranes Associates**
Oslo by **Square 134 Architects**

2017 Jury

Paul Masi - Bates Masi Architects
Natalye L. Appel, FAIA, LEED AP - Natalye Appel + Associates Architects, LLC
Jason Forney - Bruner / Cott Architects & Planners

To encourage excellence in local residential architecture, the WASHINGTONIAN magazine and the Washington Chapter of the American Institute of Architects (AIA | DC) have held the annual Washingtonian Residential Design Awards Program for 35 years. Distinctive residential projects, regardless of size or classification, are recognized on the basis of excellence in total design, including aesthetics, programmatic response and sustainability.

EXHIBITION CORNER

Gallery Hours:

Mon - Wed: 10 AM - 7 PM
Thurs - Fri: 10 AM - 5 PM
Sat - Sun: Closed

Wish You Were Here! Vintage Postcards from Washington, D.C.

July 10 - September 8, 2017

This exhibition takes visitors on a visual journey through the capital city as it was illustrated through postcards from the early-to-mid 20th century. Organized by AIA | DC, the exhibition features over 300 vintage postcards showing sightseeing, transportation, street scenes, museum and government buildings, commercial establishments, sacred spaces, and parks.

<http://bit.ly/DCHistoryPostcards>

2017 Professional Awards of the Potomac Chapter, ASLA

June 27 - August 25, 2017

This exhibition highlights 15 award-winning works of landscape architecture from the 2017 Professional Awards of the Potomac Chapter, ASLA. The range of projects encompasses residential, private and public practice, and a variety of project types that includes parks, courtyards, plazas, historic landscapes, and public realm guidelines.

<http://bit.ly/PotomacASLA2017>



IRONSTAR
BUILDING COMPANY

ironstar.net

*Bringing commercial grade
construction management to
the custom residential market*

Build well. Create value. Construct relationships.

Marty Jakovics
Architectural Representative
mjakovics@tremcoinc.com

TREMCO
ROOFING & BUILDING MAINTENANCE

Office: 800.628.7501
Mobile: 443.928.9173

***Providing support for Design professionals
in the Washington D.C. metro area and beyond***

SPECIFICATION ASSISTANCE

- Taper Plans
- Detailing Issues
- Code Compliance

BUDGET DEVELOPMENT

- Life-Cycle Costing
- Energy Paypack
- LEED Considerations

ROOF DIAGNOSTICS

- Roof Surveys
- Core Analysis
- Moisture Surveys (IR & Nuclear)
- SkyBeam (Drone Diagnostics)

TREMCO ALSO PROVIDES:

- US & Canadian Coverage
- Job Site Inspection
- Building Envelope Air Barrier Evaluation

www.tremcoroofing.com



Washington Architecture Video Series Adds New Interview

The *Giants of Washington Architecture* series added a third interview that deserves viewing. Episode 3 features Amy Weinstein, FAIA, of Gensler. For Amy, design is a family affair. Her father was a notable architect and former President of AIA | DC. Her family’s architectural impact continues with her architect son. (Running time: 16:54)

Giants of Washington Architecture is a video series produced by Washington Architectural Foundation. Each episode features a conversation with designers who took a risk on downtown DC before it was trendy. The bustle of streets outside the

District Architecture Center is an echo of projects from the past founded on the vision of a District worth living and loving in – a city for more than business hours.

Watch *Giants of Washington Architecture* at aiadc.com/GiantsOfWashingtonArchitecture.

This series made possible by a grant from the Humanities Council of Washington, DC, an affiliate of the National Endowment for the Humanities, and a grant from the DC Preservation League.

Community Farm Design-Build Project Nears Completion

In June, AIA | DC staff dropped by the DIA: Build project site at Common Good City Farm (CGCF). High school students from the Washington Architectural Foundation’s Design in Action program are working alongside Catholic University architecture

students to build a storage unit to better serve the neighborhood.

The week of AIA | DC staff visit, the team had moved a shipping container already at the site onto a level, sturdy foundation. Staff interviewed the crew the Saturday following that relocation. That day, students and volunteers were brandishing wet paint brushes dashed in brilliant white. The spruced up container will get shelving and more robust dry storage.

Phase two of the project is the real meat and potatoes. The produce generated at CGCF is spoiling before all of it can be distributed to the community. To fix that cabbage conundrum, DIA: Build team has designed a cooling structure for longer term storage. Should all go according to plan, carrots that aren’t used at harvest time will have the chance to chill out for use later in the year.



ARCHITECT: THIELSEN ARCHITECTS PROJECT: LAKEVIEW

LOEWEN WINDOW CENTER OF BETHESDA

4710 Bethesda Ave.
Bethesda, MD 20814
P. 301.215.9195

Learn more about Loewen’s commitment to environmental preservation: www.loewenwindowsofmidatlantic.com/green

LOEWEN WINDOW CENTER OF MARYLAND

7201 Rolling Mill Road
Baltimore, MD 21224
P. 410.561.1700

LOEWEN WINDOW CENTER OF ANNAPOLIS

209 Chinquapin Round Rd.
Annapolis, MD 21401
P. 443.831.4802

Design. Create. Inspire.



CORPORATE AFFILIATES OF THE MONTH

BROADWAYGALLERY
FINE ART & CUSTOM FRAMING

Broadway Gallery

Contact: Barry Broadway
Phone: 703.354.2905
Email: barry@broadwaygalleries.net

Since 1978, Broadway Gallery continues to provide its clients with a full range of fine art and custom framing services. Their reputation is built on personalized service, expert advice, diverse selection, and quality craftsmanship. We pay careful attention to every detail, to ensure your complete trust and satisfaction, no matter the size or scope

of the project. Broadway Galleries' Alexandria and Great Falls showrooms are conveniently located and provide one of the largest resources in the Washington metro area for art and frame selection. The gallery's "complete art services" include: Professional art/frame consultation; Diverse art selection; Museum quality custom framing; Art delivery, installation and shipping; Art and frame restoration; Fine art appraisals. For more information, visit broadwaygalleries.net.



Division 9 Associates

Contact: Jessica Brown
Phone: 202.442.4500
Email: Jessica.Brown@maslandcontract.com

Division 9 Associates is a multi-line sales agency representing numerous flooring manufacturers in the DC and Baltimore metro areas. Their goal is to bring simplicity to specifying finishes, whether you design for corporate, higher education, healthcare, or hospitality clients. Whether it's wood, carpet, lvt, rubber, cork, or laminate, they've got you covered. For more information, visit www.division9associates.com.

AIA | DC MEMBER NEWS

B



Rendering of new Tysons Corner, VA building, designed by Bonstra | Haresign
A new 31-story corporate headquarters in Tysons, VA now stands two-thirds at approximately two thirds of its ultimate height. The 470 feet tower, designed by **Bonstra | Haresign ARCHITECTS** in association with **HKS** and **CallisonRTKL**, sits next to the first stop of Metro's Silver Line. The tower is the next phase of an updated mixed-use urban village, which envisions a vibrant transit-oriented urban community in accordance with Fairfax County's Tysons Comprehensive Plan.

C

Allison Cooke, principal and hospitality director at **CORE architecture + design**, to participate in Bisnow's Metro DC Retail event on July 20, 2017. Cooke will contribute her unique industry insights to a discussion exploring the impact of mixed-use in metro DC. She'll

provide an insider's look into the region's ever-expanding retail and restaurant scene.

CORE architecture + design up its studio to members of the Hospitality Industry Network during that organization's NEWH Pirate Party on June 23, 2017. The CORE team took participants on a tour of the office, sharing behind the scenes aspects about the firm's hospitality projects.

G



Rendering of new ASID headquarters, designed by by GHT Limited.

GHT Limited's American Society of Interior Designers (ASID) Headquarters project has achieved Platinum Level Certification for the WELL Building Standard™ (WELL™) under WELL v1 and Leadership in Energy and Environmental Design (LEED), under the LEED ID+C rating system – the highest recognition awarded by the U.S. Green Building Council (USGBC) and the International WELL Building Institute™ (IWBI™).



Steve Parker, FAIA, founding partner and current Chairman Emeritus of **Grimm + Parker Architects**, was elevated to the American Institute of Architects (AIA) College of Fellows at the national AIA Conference in Orlando, FL.

Grimm + Parker Architects received the title of Best Design Award, New Elementary School from the **Virginia Chapter of Association for Learning**

Environments (VA4LE) for their Discovery STEM Academy project.



Classroom at Discovery STEM Academy, designed by Grimm + Parker Architects.

H

HapstakDemetriou+'s client Mark Furstenberg won for "Outstanding Baker" for his Bread Furst bakery during the 2017 James Beard Awards. This marks the 2nd consecutive year that a **Hapstak Demetriou+** client has been honored.



Bread Furst bakery, designed by HapstakDemetriou+.

HapstakDemetriou+ is pleased to announce the completion of three new restaurant projects: El Mercado @ Paseo Caribe, a new food destination in San Juan, Puerto Rico; On Rye, a contemporary sandwich shop located at 740 Sixth Street NW in Washington, DC; and Ouzo Bay that recently opened in Boca Raton, Florida.



Ouzo Bay in Boca Raton, FL, designed by HapstakDemetriou+.

HGA Architects and Engineers announced today that **Peter D. Cook, AIA, NOMA**, has joined the firm as design principal in the Washington, D.C. office. His design leadership, strategic planning and architectural expertise will enhance HGA's growing East Coast presence.

Hoffmann Architects is pleased to announce the promotion of eight staff members in three offices, including **J. Christopher Clements, Assoc. AIA**, of AIA | DC.



Christopher Clements, Assoc. AIA

Building Design +Construction has awarded **LEO A DALY** a Building Team Award (Bronze) for Intelligence Community Campus – Bethesda, a new, collaborative campus for the United States intelligence community in Bethesda, MD. The project includes over 750,000 SF of new construction and renovation to the 1940s campus of the former National Geospatial-Intelligence Agency. At its heart is the new, Z-shaped, 220,000-sf Centrum Building, which links three existing buildings and serves as the vertebra of the campus. The existing buildings were hardened with Anti-Terrorism/Force Protection and re-skinned to embody a cohesive, non-institutional exterior aesthetic.



New Campus for the U.S. Intelligence Agencies in Bethesda, MD, designed by LEO A DALY.

LEO A DALY has hired **Melissa Bennett, AIA**, as market sector leader for Education. She will be in charge of strategy, business development and design excellence for education projects in the firm's Washington D.C. office. Bennett bring 30 years of experience working with variety of public and private institutions of higher education, and has a particularly deep expertise in academic libraries and campus planning.

IS THERE A HOLE IN YOUR PLAN?

Before you get started on your next project, make the decision to incorporate natural gas into your design plan. In addition to offering a host of resources, our teams possess the technical skills to understand your design requirements and will give you the solutions you need—without compromising aesthetics or functionality. Make your next project the best it can be. Choose gas.

BuildSmartChooseGas.com



Realize your full potential with BIM

We can help you get the ROI you want from your design processes and software, like Autodesk Revit, Navisworks and Bluebeam.

We're here to help you:

- + Make the transition to 3D and BIM, to leverage the benefits of modeling
- + Maximize the benefits of the technology you've purchased
- + Evolve workflows and processes to use your model data more efficiently
- + Streamline workflows and create design standards
- + Seamlessly update processes and roll out learning paths

Get the unrivaled expertise of CADD Microsystems on your team, and we'll bring with us our decades-long partnerships with industry leaders like Autodesk, Bluebeam and Global eTraining.

CALL: 800.550.CADD | **CLICK:** www.caddmicrosystems.com/tpa



AIA | DC members may submit "Member News" items to newsletter@aiadc.com.

M



St. Augustine's Episcopal Church in Southwest DC, designed by MTF Architecture.

MTFA Architecture received an American Institute of Architects, Northern Virginia Design Award for St. Augustine's Episcopal Church located on the Southwest DC waterfront. St. Augustine's existing one-story 1960's building was in disrepair and on the verge of being overwhelmed by surrounding development. The concept of a ship with sails moving forward relates to the waterfront site and religious symbolism. To further establish

the church's presence in the community, the sanctuary is elevated above the ground floor, lifting one corner toward the sky to emphasize verticality.

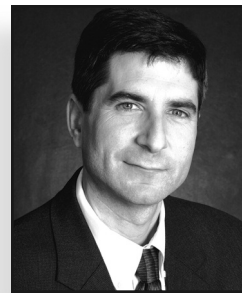
N

Nitsch Engineering, a Boston-based firm that specializes in providing engineering and planning services for infrastructure and site development projects, has opened a Washington, D.C. office, located at 2175 K Street. This is the company's fourth office, in addition to Boston (headquarters), Lawrence, and Worcester, Massachusetts. **Nitsch** is now working with **AKRF** and **Anchor Construction** to implement green infrastructure solutions for DC Water across the Rock Creek watershed. **Nitsch Engineering** is a Corporate Affiliate member of AIA | DC.

P

Matt Bell FAIA, Principal of **Perkins Eastman**, recently spearheaded three days of workshops, where 170 stakeholders worked together to formulate ideas for developing the West Sector of George Mason University's Fairfax Campus. **Perkins Eastman**, master planner of the project, and the stakeholders created the concept for a mixed-use "Innovation District," which would include research, academic, and residential buildings. Excitement grew as the ideas resonated, and people embraced the vision of athletic fields, public open spaces, arts and cultural venues, and retail integrated into the mix.

Perkins+Will is proud to announce the following promotions in our DC office: **Paul Harney, AIA, NCARB, LEED AP BD+C** to Principal, **Tatiana Escobar, AIA, LEED AP BD+C** to Associate Principal and **David Cordell, NCIDQ, LEED AP, WELL AP, Fitwel Ambassador** to Associate Principal. **Perkins+Will** also welcomes **Sara O'Neil Manion, AIA, LEED AP** to the Washington, DC office as an Associate Principal. Sara brings over 4 decades of experience in science research facilities and laboratories, historic properties, master planning, and hospitality projects.



Paul Harney, AIA, NCARB, LEED AP BD+C



Tatiana Escobar, AIA, LEED AP BD+C



David Cordell, NCIDQ, LEED AP, WELL AP, Fitwel



Sara O'Neil Manion, AIA, LEED AP

The Children's National Health System's Bunny Mellon Healing Garden celebrated its Grand Opening on May 8th. The **Perkins+Will** team was led by **Diana Horvat, AIA, IIDA, LEED AP** and **Tatiana Escobar, AIA, LEED AP BD+C**.



Children's National Health System's Bunny Mellon Healing Garden in Northwest DC, designed by Perkins+Will.



Tinkham Veale University Center at Case Western Reserve University, designed by Perkins+Will.

The **Perkins+Will** team received four recognitions from the American Institute of Architects, Northern Virginia Design Awards. Winning designs were for the **ASID Headquarters**, **Case Western University Tinkham Veale Center**, **CCALS**, and **Whitman Walker Health**.

The 36,000 sf Headquarters of Airlines for America achieved LEED Silver. The **Perkins+Will** design team was led by **Ken Wilson, FAIA, FIIDA, ASID, LEED Fellow** and **Laura Morris, MCR, IIDA, LEED AP**.

The 150,000 sf, \$102 million Bowie State Center for Natural Sciences, Mathematics and Nursing celebrated its grand opening on June 9th. **Paul Harney AIA, NCARB, LEED AP BD+C** of **Perkins+Will** offered remarks to the audience articulating the bright future that STEM projects like Bowie CNSMN represent for our community.

The **Perkins+Will** designed American Society of Interior Designers (ASID) Headquarters, became the first office in the world to achieve both LEED Platinum and WELL Platinum Certifications. The team was led by **Ken Wilson, FAIA, FIIDA, ASID, LEED Fellow**. **Badlands Playspace** has opened in Rockville, MD. From vision concepting to interior architecture and landscape architecture,

S

Streetsense designed based on zones of proximal development and bringing nature indoors to encourage unstructured learning. The design collaboration was led by **Alexander Crawford, Hugo Rodrigues, AIA, NCARB**, and landscape architect **Luis Gonzalez, PLA, ASLA, AICP**.



Rendering of Woodridge, VA's new town center, designed by Streetsense.

Streetsense's work on Stonebridge in Woodbridge, VA is underway. With the addition of the Alamo Draffhouse Cinema, **Streetsense** proposed a plan to better activate the town center and refresh the built environment. The new town center will feature a grand lawn that serves as a seasonal public space. **Streetsense** also proposed kid-friendly linear pocket parks, fresh environmental graphics, and a wayfinding system to help equally distribute pedestrian traffic across the town center.



WAGNER
ROOFING COMPANY

SINCE 1914

COMMERCIAL & RESIDENTIAL
COPPER, SLATE & TILE
FLAT ROOFING
ORNAMENTAL METAL
GUTTERS & DOWNSPOUTS
HISTORIC RESTORATIONS

(301) 927-9030
WAGNERROOFING.COM

Q

Quinn Evans Architects has named four architects as principals and stockholders with the firm: **Mark Nook, AIA; Brian Oster, AIA, LEED AP BD+C; Anath Ranon, AIA, LEED AP BD+C;** and **Brandon Schultz, AIA, LEED AP BD+C, LEED Homes.** All four are part of the management team of **Cho Benn Holback + Associates, a Quinn Evans Company.** **Quinn Evans Architects** acquired Baltimore-based **Cho Benn Holback + Associates** on May 1, 2017.

R

R. McGhee & Associates is pleased to announce that **Matthew Eide** has been named **Marketing Coordinator.** Matthew's experience covers a diverse range of organizations from small non-profits to professional sports teams and we are very excited to have Matthew on our team!

Z

Michael Zajkowski, AIA, LEED AP BD+C, has joined **Stantec Architecture** as a senior project designer in the firm's Arlington, Virginia office. Zajkowski's broad design expertise encompasses higher education, healthcare, laboratory, and office projects. Over a 30-year career, Zajkowski has delivered award-winning designs for a diverse client base, including the National Cancer Institute, Dulles Airport and the Soka Gakkai International -USA Buddhist organization. He is a graduate of the University of Virginia and Duke University.



Michael Zajkowski, AIA, LEED AP BD+C

AIA | DC members may submit "Member News" items to newsletter@aiadc.com.

Come build with us!
Join us for a week this summer!

Dates: August 7-11, 2017	Time: 9:00 AM-12:00 PM
Ages: 8-12	Cost: \$75 for children of DAC/AIA members; \$90 for children of non-members
Location: DAC, 421 7th St. NW, Washington, DC 20004	

**District Architecture Center
Summer
C.A.Camp
2017**

To register, please visit www.aiadc.com/event/dackids-summer-camp

Real or 3d?

We Help Bring Your Visions to Life!
email: info@3dstormstudio.com



www.3dstormstudio.com

3D Virtual Staging

3D Conceptual Designs

3D Architectural Renderings

3D Walkthrough & Flyby Animations

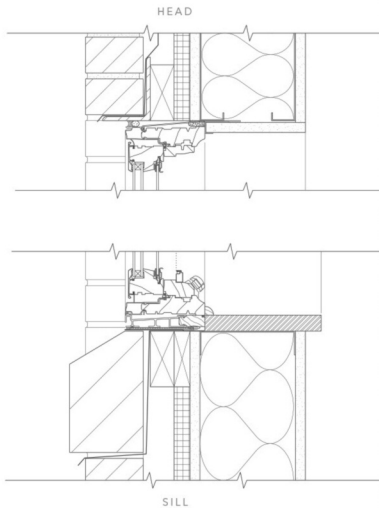
We Provide High Quality 3d Architectural Rendering & Animation Services in Metro DC

3DSTORMSTUDIO
ARCHITECTURAL RENDERING AND COMPUTER GRAPHICS SERVICES
1050 Connecticut Avenue, NW, 10th Floor, Washington, DC 20036

Call 571.243.0236



TECHNICAL
CAPABILITIES.



MIDTOWN COMMUNITY
ELEMENTARY SCHOOL
NEPTUNE TOWNSHIP, NJ
SSP ARCHITECTURAL GROUP

EDUCATION

CREATIVE
POSSIBILITIES.



Pella Windows & Doors

Timothy R. Allen

12100 Baltimore Avenue, Suite 1

Beltsville, MD 20705

Cell: 301-675-9324

Phone: 301-957-7000

Email: tallen@kc-pella.com

pellacommercial.com

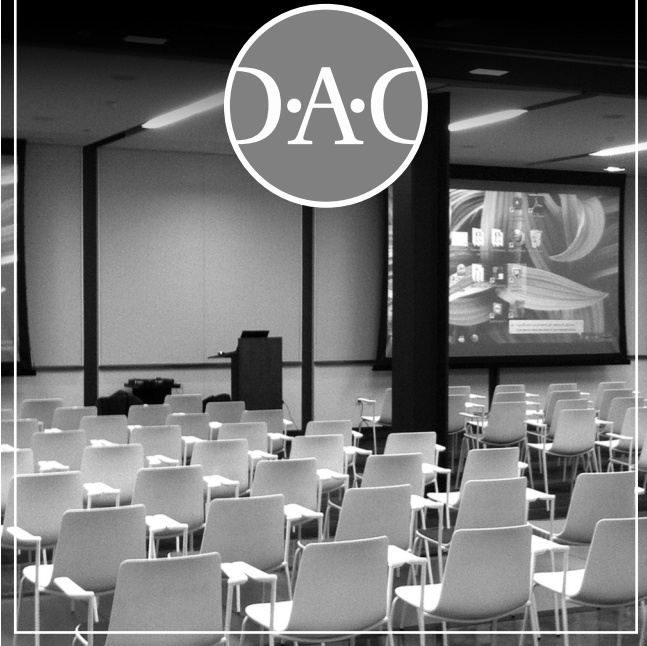
See both sides of this story at pellacommercial.com/mces.



COMMERCIAL
SOLUTIONS

© 2014 Pella Corporation

**HOLD YOUR NEXT MEETING
OR PRIVATE EVENT HERE!**



202-347-9403 • lheadrick@aiadc.com
www.aiadc.com

ARCHITECTURAL RESOURCES, INC.

BOBRICK

Mike Clancy, CSI, CDT
Architectural Representative

7835 Belle Point Drive • Greenbelt, MD 20770

Phone: 301-982-6464 • Fax: 301-982-5100

Toll Free: 877-423-7426

mike@archres-inc.com • www.architectural-resources.net

Washroom Equipment Since 1908

HENRY ADAMS CONSULTING ENGINEERS

MECHANICAL, ELECTRICAL, & PLUMBING ENGINEERS

814 N. Charles | SM+P Architects



Not All Mechanical Designs Are Created Equal

1090 Vermont Avenue, NW, Suite 230 | Washington, DC 20005
(202) 450-5798 | www.HENRYADAMS.com

KH KEAST & HOOD STRUCTURAL ENGINEERS



Marvin Gaye Recreation Center | Washington, DC

Client, Photo Credit: IStudio Architects

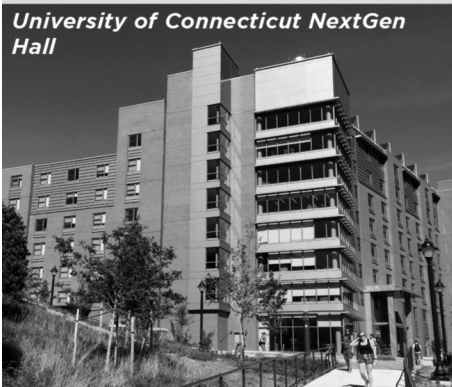
www.keasthood.com

Philadelphia | Washington | Charlottesville

New Construction • Renovation • Addition • Adaptive Reuse
Historic Preservation • Masonry Stabilization • Structural Intervention



DOO CONSULTING
LEEDing in Higher Education



IgCC, LEED v4, Green Globes, Living Building Challenge
www.dooconsulting.net 443.653.3792



Lasting. Beautiful. Classically Modern.

Potomac Valley Brick offers architects the widest selection of quality masonry products in the region. Our expertise in the product selection, design and application of the industry's finest and most prestigious masonry lines has been helping architects achieve their building design dreams for more than 40 years.

www.pvbrick.com | (301) 309-9600

Baltimore ♦ Easton ♦ Frederick ♦ Gaithersburg ♦ Newington ♦ Rockville ♦ Salisbury





A place where old world craftsmanship and cutting edge technology meet to create a new standard of high-end windows & doors for discerning clientele.

www.lepagemillwork.com



1.888. TW.PERRY www.twperry.com



TW Perry Architectural Window Consultants

....for a well informed decision

windowsmetrodc@twperry.com

BALTIMORE, MD — CHEVY CHASE, MD — GAITHERSBURG, MD — LEESBURG, VA — SPRINGFIELD, VA